

# Sample Alternate Format and Grids

**Multiple-Choice Format**

A train travels 120 miles in 2 hours. If a car can travel the same distance in 3 hours how many hours will it take the car to travel 360 miles?

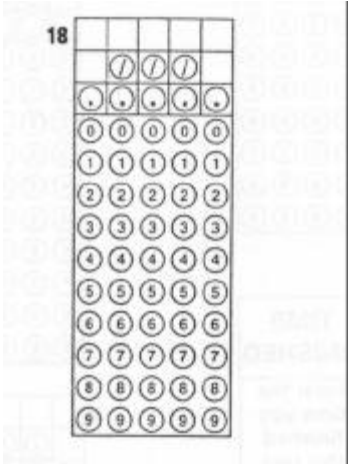
- (1) 9
- (2) 6
- (3) 4
- (4) 3
- (5) 1

**Alternate or Open-Ended Format**

A train travels 120 miles in 2 hours. If a car can travel the same distance in 3 hours how many hours will it take the car to travel 360 miles?

Mark your answer in the circles in the grid on the answer sheet.

Standard Grid



Plotting Grid for Coordinates

